

# InstantStart® LED Light Tubes Gen 2

## Type A+B for Commercial and Special Applications



**STRIPED** G13 Bi-Pin



**FROSTED** Fa8 Single Pin



CLEANLIFE® InstantStart® LED Light Tubes are the ultimate LED lighting solution for the re-manufacturing and retrofitting of refrigeration, fountain and vending equipment with electronic or electromagnetic ballasts. Some models may also be used for commercial and industrial general lighting applications.

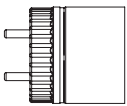


Rotatable

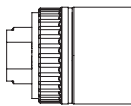


Plug & Play

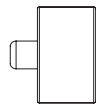
### Base Types



G13 Bi-Pin



R17d HO



Fa8 Single Pin

### FEATURES

- The InstantStart® Tube's versatility enables it to be installed with or without an electronic ballast/ electromagnetic ballast:
  - Operate directly on existing electronic or electromagnetic ballasts for retrofits in the field\*
  - Bypass the ballast all-together and wire directly to AC line voltage
- G13 Bi-Pin, R17d HO, Fa8 Single Pin, Robust Metal Heat Sink, Rotatable End Caps
- Available in 12", 15", 18", 20", 24", 26", 28", 30", 33", 36" 48", 60", 64", 72"
- Long Lifetime, L70>50,000 Hours
- 5-Year Manufacturer's Limited Warranty

*\*Approved Electronic Ballasts Only. Please see your CLEANLIFE® representative for more information.*



5-Year Limited Warranty

### APPLICATION INFORMATION

#### Applications

- Coolers
- Vending Machines
- Fountain Equipment
- Warehouse
- Task Lighting
- Indoor Signage

#### Market Segments

- All

#### Color Temperature:



6500K ±510



Anti-Glare



Ultra Bright



Robust Design



Easy to Install



Energy Saving



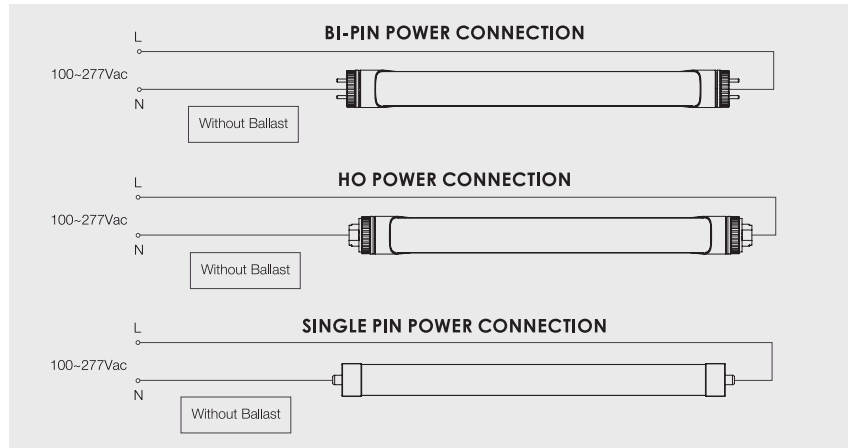
## Ordering Information

Part Number	Length (IN)	Lens	Base Type	Color Temperature	Input Voltage (V)	Rated Power (W) (±10%)	Typical Lumens (lm) (±10%)	Nominal Lumens Per Watt	CRI (±5)	Replaces	Energy Savings
CL-T8-6W300 BQET(G2S65G)	12	Striped	Bi-pin	6500K ±510	100~277 AC	6	650	108	85	F13/T8	17%
CL-T8-6W300 BQET(G2F65G)	12	Frosted	Bi-pin	6500K ±510	100~277 AC	6	600	100	85	F13/T8	17%
CL-T8-7W375 BQET(G2S65G)	15	Striped	Bi-pin	6500K ±510	100~277 AC	7	740	106	85	F14/T8	20%
CL-T8-7W375 BQET(G2F65G)	15	Frosted	Bi-pin	6500K ±510	100~277 AC	7	770	110	85	F14/T8	20%
CL-T8-8W450 BQET(G2S65G)	18	Striped	Bi-pin	6500K ±510	100~277 AC	8	850	106	85	F15/T8	87%
CL-T8-8W450 BQET(G2F65G)	18	Frosted	Bi-pin	6500K ±510	100~277 AC	8	880	110	85	F15/T8	87%
CL-T8-9W500 BQET(G2S65G)	20	Striped	Bi-pin	6500K ±510	100~277 AC	9	950	106	85	F24/T12	67%
CL-T8-9W500 BQET(G2F65G)	20	Frosted	Bi-pin	6500K ±510	100~277 AC	9	900	100	85	F24/T12	67%
CL-T8-10W600 BQET(G2S65G)	24	Striped	Bi-pin	6500K ±510	100~277 AC	10	1055	106	85	F17/T8	70%
CL-T8-10W600 BQET(G2F65G)	24	Frosted	Bi-pin	6500K ±510	100~277 AC	10	1055	106	85	F17/T8	70%
CL-T8-11W660 BQET(G2S65G)	26	Striped	Bi-pin	6500K ±510	100~277 AC	11	1160	105	85	F18/T8	64%
CL-T8-12W711 BQET(G2S65G)	28	Striped	Bi-pin	6500K ±510	100~277 AC	12	1270	106	85	F18/T8	50%
CL-T8-12W750 BQET(G2S65G)	30	Striped	Bi-pin	6500K ±510	100~277 AC	12	1270	106	85	F21/T8	75%
CL-T8-12W750 BQET(G2F65G)	30	Frosted	Bi-pin	6500K ±510	100~277 AC	12	1320	110	85	F21/T8	75%
CL-T8-14W830 BQET(G2S65G)	33	Striped	Bi-pin	6500K ±510	100~277 AC	14	1470	105	85	F25/T12	79%
CL-T8-14W830 BQET(G2F65G)	33	Frosted	Bi-pin	6500K ±510	100~277 AC	14	1470	105	85	F25/T12	79%
CL-T8-15W900 BQET(G2S65G)	36	Striped	Bi-pin	6500K ±510	100~277 AC	15	1580	105	85	F25/T8	67%
CL-T8-15W900 BQET(G2F65G)	36	Frosted	Bi-pin	6500K ±510	100~277 AC	15	1580	105	85	F25/T8	67%
CL-T8-18W1200 BQET(G2S65G)	48	Striped	Bi-pin	6500K ±510	100~277 AC	18	1900	106	85	F32/T8	78%
CL-T8-18W1200 BQET(G2F65G)	48	Frosted	Bi-pin	6500K ±510	100~277 AC	18	1900	106	85	F32/T8	78%
CL-T8-26W1500 BQET(S65G)	60	Striped	Bi-pin	6500K ±510	100~277 AC	26	2750	106	85	F35/T8	35%
CL-T8-26W1500 BQET(F65G)	60	Frosted	Bi-pin	6500K ±510	100~277 AC	26	2500	96	85	F35/T8	35%
CL-T8-26W1575 BQET(F65F)	64	Frosted	Single pin	6500K ±510	100~277 AC	26	2460	95	85	F38/T8	46%
CL-T8-26W1800 BQET(S65G)	72	Striped	Bi-pin	6500K ±510	100~277 AC	26	2720	105	85	F72/T18	77%
CL-T8-26W1800 BQET(F65G)	72	Frosted	Bi-pin	6500K ±510	100~277 AC	26	2700	104	85	F72/T12	77%
CL-T8-26W1800 BQET(F65F)	72	Frosted	Single pin	6500K ±510	100~277 AC	26	2730	105	85	F38/T8	46%

## Suggested Ballast Compatibility

BRAND NAME	LAMP SERIES	MODEL NUMBER
PHILIPS ADVANCE	IS Electronic Ballast	IOPA-4P32-N
PHILIPS ADVANCE	IS Electronic Ballast	RELB-2S40-N
PHILIPS ADVANCE	IS Electronic Ballast	REB-2P32-SC
PHILIPS ADVANCE	IS Electronic Ballast	REB-4P32-SC10
PHILIPS ADVANCE	IS Electronic Ballast	CN-2P32-N
PHILIPS ADVANCE	IS Electronic Ballast	ICN-3P32-N
PHILIPS ADVANCE	IS Electronic Ballast	ICN-4P32-N
OSRAM SYLVANIA	IS Electronic Ballast	QTP 1X32T8/UNV ISN-SC
OSRAM SYLVANIA	IS Electronic Ballast	QTP 2X32T8/UNV ISN-SC
OSRAM SYLVANIA	IS Electronic Ballast	QTP 3X32T8/UNV ISN-SC
OSRAM SYLVANIA	IS Electronic Ballast	QTP 4X32T8/UNV ISN-SC
TRIAD	IS Electronic Ballast	B332IUNVEL-A
GE	IS Electronic Ballast	GE332MV-N-DIY
ACCUPRO	IS Electronic Ballast	AP-432IP-UNV
TEYUAN	IS Electronic Ballast	TBE-34CFW

## Wiring Diagram for Ballast Bypass



## LED Light Tube Dimensions

Part Number	A (in.)	B (in.)	C (in.)
CL-T8-6W300 BQET(G2X65G)	11.18	11.45	11.73
CL-T8-7W375 BQET(G2S65G)	14.22	14.45	14.72
CL-T8-8W450 BQET(G2X65G)	17.22	17.45	17.72
CL-T8-9W500 BQET(G2X65G)	19.13	19.41	19.69
CL-T8-10W600 BQET(G2X65G)	23.22	23.45	23.72
CL-T8-11W660 BQET(G2S65G)	25.22	25.45	25.72
CL-T8-12W711 BQET(G2S65G)	27.22	27.45	27.72
CL-T8-12W750 BQET(G2S65G)	29.22	29.45	29.72
CL-T8-14W830 BQET(G2X65G)	32.22	32.45	32.72
CL-T8-15W900 BQET(G2X65G)	35.22	35.45	35.72
CL-T8-18W1200 BQET(G2X65G)	42.22	47.45	47.72
CL-T8-26W1500 BQET(X65G)	59.05	59.29	59.56
CL-T8-26W1575 BQET(F65F)	61.16	61.54	61.87
CL-T8-26W1800 BQET(X65G)	69.05	69.57	69.84
CL-T8-26W1800 BQET(F65F)	69.15	69.55	69.87

